

## Venue Operations Guide



# Elk River Extreme Motor Park

**Venue:** E.R.X.

**Physical Address:** 21591 US-169, Elk River, MN 55330

**Office Phone:** 763-772-4977

**Venue GPS:** 45.365733, -93.563970 (Entrance)

**Owner:** Unknown / Private

**Promotor:** ISOC Regional SnoCross

**Contacts:** Bobby, Carl, Jay

### Venue Emergency Resources:

**Request Method:** Phone

**Resources Available:** Paramedic Intercept, Air Medical, Sheriff Deputy

**County:** N/A

**Local Ambulance:** Elk River Fire

**Radio Access:** No

**Radio Dial:** N/A

**Cell Phone Service:** Yes

**County Sheriff Dispatch:** 911

**Air Rescue:** N/A

**Landing Zone GPS:** N/A

**Air services are available but Elk River Ambulance is in close proximity to multiple Level I trauma centers.**

### Landing Zone:

Landing zone is to be determined by Elk River Ambulance, patient care should be transferred to the local service for flight if needed.

## Regional Resource Hospitals:

<b>Transports</b>	<ul style="list-style-type: none"><li>• Use 911 to request Elk River Ambulance.</li><li>• Relay patient information.</li><li>• Replay intercept location.</li><li>• Call with updates as needed.</li></ul>
<b>Staging Intercept</b>	<p>Stage at or near location indicated on site map.</p> <p>Allow truck to high idle as needed for heat / comfort</p> <p><u>Refer to truck guide on the staff website for cold weather truck operations.</u></p> <p>Intercept at large steel building parking lot indicated on site map.</p> <p>Drive forward and turn right then left into parking lot and wait for Elk River Fire</p>

**This venue does not appear to have any specific safety guidelines in place such as a helmet rule.**

The EMS team is not the police but we are obligated to promote safety and adherence to the venue rules, involve venue staff if need be.

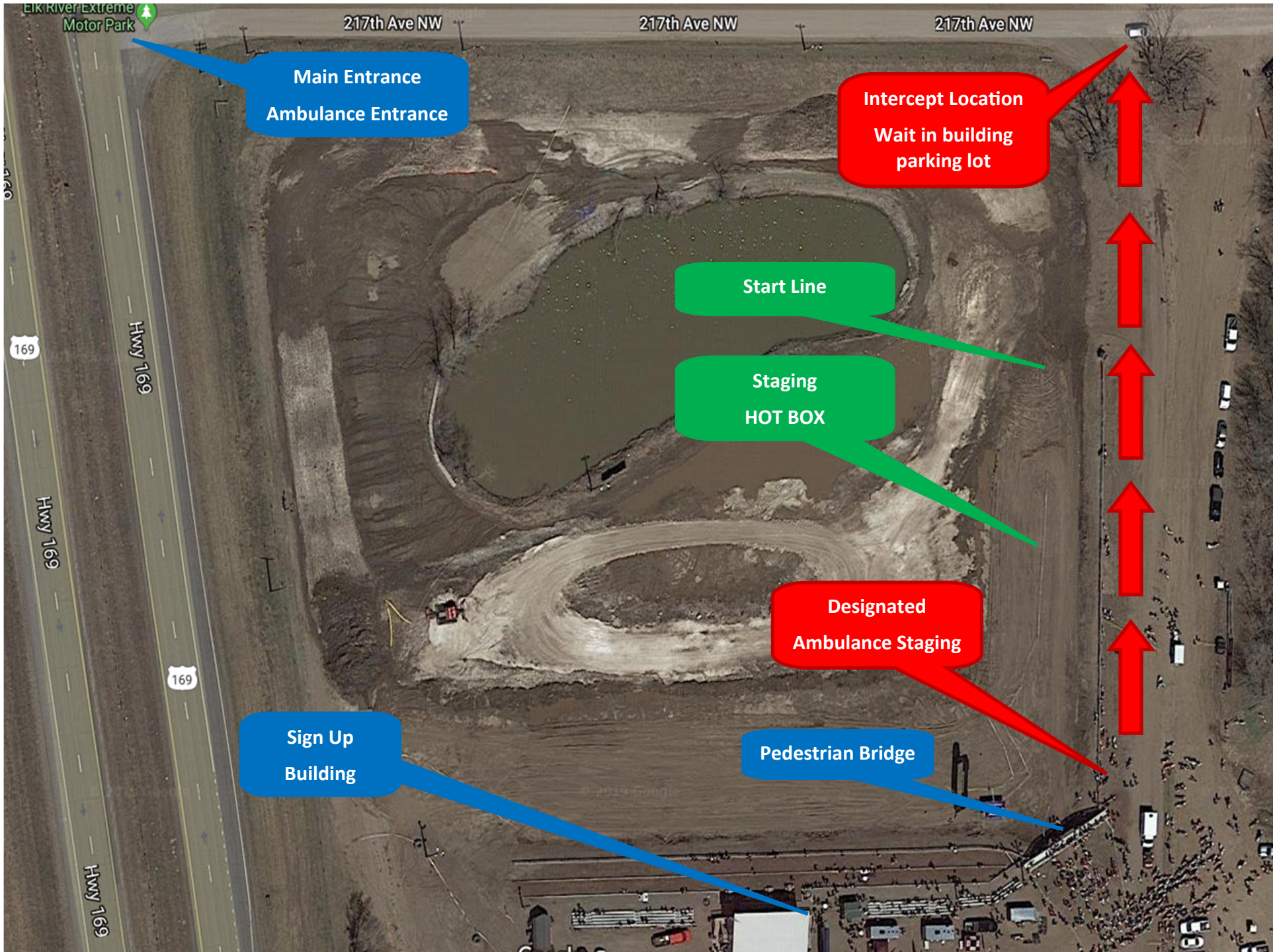
## Venue Communications:

This venue has their own leased radios, locate the scoring / sign up office and sign out a radio to use.

Confirm with staff which channel to use.

Contacts: (Call in listed order)

1. Bobby: 218-269-5644 - Regional Operations - Scoring - Office
2. Jay: 612-501-3795 - Race Director - Flaggers - Safety
3. Carl (Promotor) 218-310-5827 - ISOC Director



Main Entrance  
Ambulance Entrance

Intercept Location  
Wait in building  
parking lot

Start Line

Staging  
HOT BOX

Designated  
Ambulance Staging

Sign Up  
Building

Pedestrian Bridge

