

Venue Operations Guide



Holzauer Motorsports

Venue: Holzauer	Physical Address: 17933 Holzauer Automall Dr, Nashville, IL 62263
Office Phone: None	Venue GPS: 38.362916, -89.374167
Owner: Brad Holzauer	Promotor: Varies / Mid-America Series
Brad Cell: 618-314-3046	Contact: Promotor First then Brad Holzauer
Venue Emergency Resources:	
Request Method: Phone (911)	Resources Available: Paramedic Intercept, Sheriff Deputy
County: Washington	Local Ambulance: Washington County Ambulance Ph: 618-327-3075
Radio Access: No	Radio Dial: N/A - IREACH <i>(For flight communion only)</i>
Cell Phone Service: Yes	Sheriff Non-Emergency: 618-327-8274
Air Rescue: Air Evac or Arch	Landing Zone GPS: 38.338728, -89.392312 Washington Co. Hospital
Air Evac Dispatch: 800-247-3822 - <u>Utilize IREACH on the radio to speak with flight crew</u>	
Arch Air Medical: 800-325-9191 - <u>Utilize IREACH on the radio to speak with flight crew</u>	

Landing Zone:

Landing zone is located at Washington County Hospital, bypass the ER entrance. The landing pad is behind the Hospital.

There is no space to land a craft at this venue. Gravel, debris, power poles and limited space prevent life flight on this property.

Call the desired Air Dispatch number to request service. Utilize (IREACH) on the radio dial to speak directly with the incoming flight crew.

Regional Resource Hospitals: *NO TRAUMA CENTER AVAILABLE WITHIN 60 MILES*

Regional ER

(No Trauma)

(Landing Zone)

Washington County Hospital (4.2 Miles)

705 S Grand St, Nashville, IL 62263

ER Direct: 618-327-2298 or 618-327-2361(Patient Reports) *Do not give these numbers to the public*

Main Switchboard: 618-327-8236 (Public Number)

Venue Description:

Private property consisting of a car dealership, tractor pull track and a seldom used motocross track.

Venue Events:

AMA sanctioned motocross.

Venue Safety Rules:

This venue does not appear to have any specific safety guidelines in place such as a helmet rule.

The rules vary with the promotor using the property.

- Over the ankle boots, Helmet, Goggles, Appropriate jersey. (All other safety gear is optional and based on rider choice.)

Venue Communications:

None provided - Work directly with the promotor using the venue.

Basic Guidelines and Venue Specifics:

- **Intercept Location:** Drive to the front of the property by the main gate, wait for Washington County.
- **Intercept Requests:** Call 911 and request an intercept with Washington County Ambulance.
- **Request flight:** By calling either Arch or Air Evac directly. Direct them to the Washington County Hospital landing zone.
- **DO NOT take significant trauma to the local ER, limited resources will only delay patient transport by air. (Per hospital staff)**

Camper Parking
Ambulance Staging

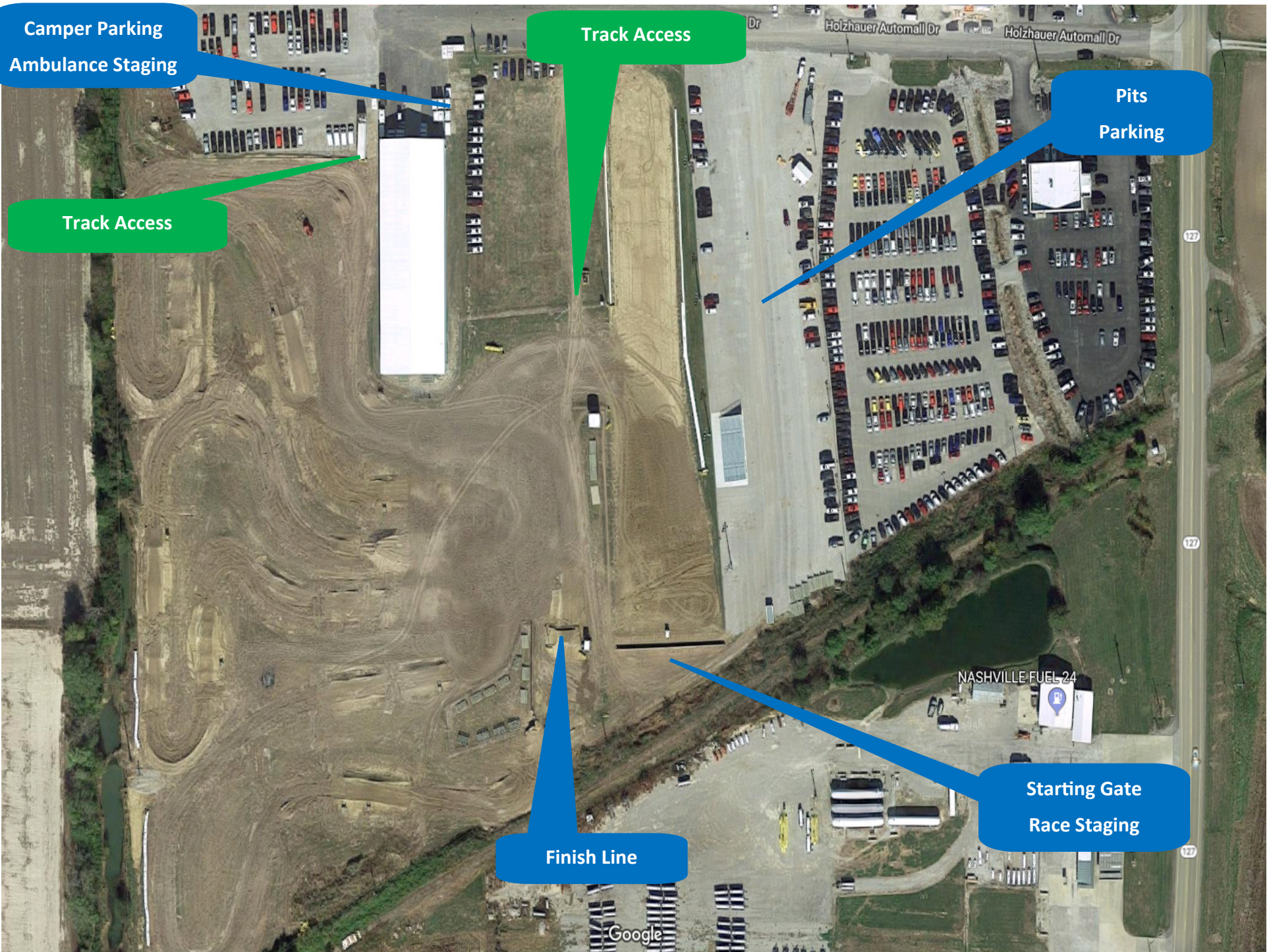
Track Access

Track Access

Pits
Parking

Finish Line

Starting Gate
Race Staging



Google

NASHVILLE FUEL 24

127

127

127