

Venue Operations Guide



Mountain “MotoSplat”

Venue: “MotoSplat”	Physical Address: Eickhoff Rd South of HWY T (No Fire Number)
Office Phone: None	Venue GPS: 45.212245, -88.613687
Owner:	Promotor: Varies
	Contacts: None (Find the current promotor)
Venue Emergency Resources:	
Request Method: 911 Dispatch	Resources Available: AEMT, Air Medical, Sheriff Deputy
County: Oconto	Local Ambulance: Mountain Ambulance
Radio Access: Yes	Radio Dial: Oconto
Cell Phone Service: Yes	Oconto County Sheriff Non-Emergency: 920-834-6900
Air Rescue: Varies	Landing Zone GPS: Use venue GPS allow Mountain to setup L.Z.
	Call 911 Dispatch to arrange flight services.

Landing Zone:

Landing zone is to be determined by prevailing service as should flight decision unless there is significant trauma.

Provide 911 dispatch center with a cell phone number to call back and speak to you directly for patient information if needed.

Request Mountain Ambulance for intercept and additional resources.

Intercept Location / Requesting Transport

911 Requests	<p>When calling for a transport, make sure you request an <u>INTERCEPT</u>. Requesting an ambulance like a 911 caller will trigger first responders that you may not need on site.</p> <p>You are an Ambulance service requesting an INTERCEPT. Avoid words like extrication, motorcycle crash etc. Provide injury details and your intercept location and what you need.</p> <p>Request First Responders only if you need extra hands for a major trauma or multiple patients.</p>
Intercept Location	<p>Intercept with Mountain Ambulance near the entrance of the property if possible.</p> <p>Allow Mountain Ambulance to setup flight services, make sure Mountain Ambulance has not sent a BLS second or third out unit. You must transfer care to AEMT or above.</p>

Venue Description:

Private property and motocross track also used for hare scramble races by various promoters.

Venue Events:

Varies

Venue Safety Rules:

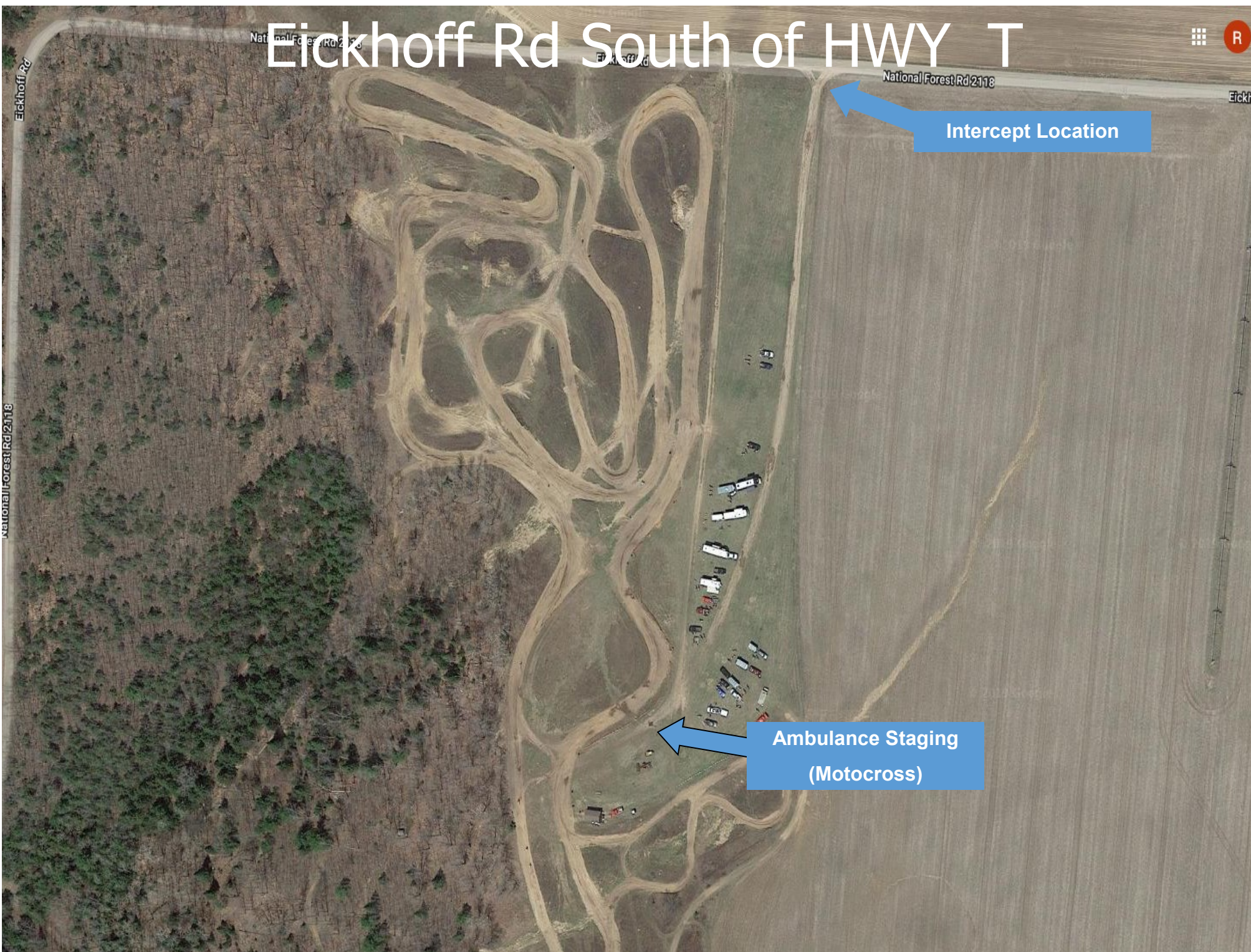
Unknown unless otherwise enforced by promotor using the venue.

Venue Communications:

Direct communication with the safety team. No radios may or may not be in use.

If you bring a spare GLEMS radio and tune it to GLEMS, offer it to the track official or promotor.

Eickhoff Rd South of HWY T



Intercept Location

Ambulance Staging
(Motocross)